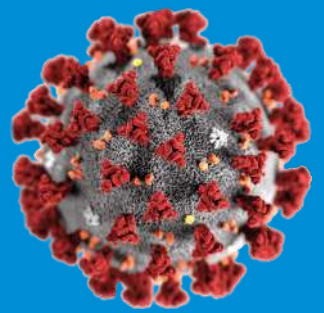
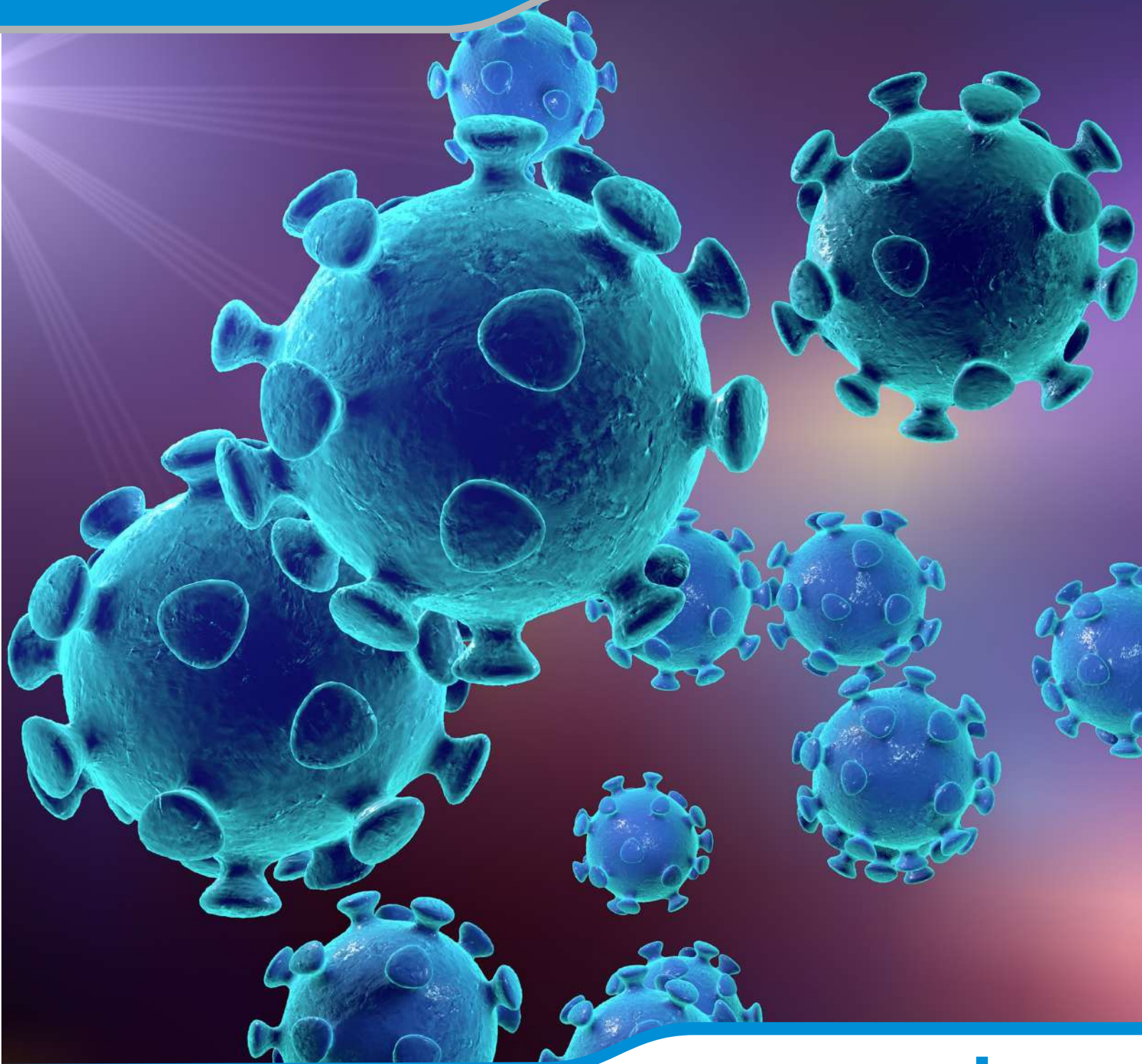


CLIA ASSAYS FOR COVID-19 DISEASE



The 2020 global diagnostic challenge



THE DEVICE HAS BEEN ADAPTED FOR THE USE IN EXCLUSIVE COMBINATION WITH THE DIA.PRO CLIA RANDOM ACCESS INSTRUMENT NAMED S.A.R.A.



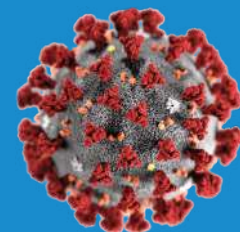
MARKED



100% MADE IN ITALY



Reliable testing for SARS-CoV-2 or Coronavirus



CLIA KITS

DIA.CHEMILUX SARS.CoV-2 NCP IgM

Monitoring of infected patients.

In addition the kit may be used when testing the population and healthcare workers looking for potentially infective "pauci" or a-symptomatic individuals in the early phase of infection, in combination with SARS-COV-2

DIA.CHEMILUX SARS.CoV-2 NCP IgA

Monitoring of infected patients.

In addition the kit may be used when testing the population and healthcare workers looking for potentially infective "pauci" or a-symptomatic individuals in the early phase.

DIA.CHEMILUX SARS.CoV-2 NCP IgG

Monitoring of infected patients.

In addition the kit may be used when testing the population and healthcare workers looking for potentially infective "pauci" or a-symptomatic individuals in the early phase of infection, in combination with SARS-COV-2 molecular tests.

DIA.CHEMILUX SARS.CoV-2 Spike/RBD Ab

Intended for testing:

- (a) Health-care workers at risk of COVID-19 infection to verify whether or not they might be positive for potentially neutralizing anti Spike antibodies.
- (b) Normal population for epidemiology studies on presence of potential "protective" Antibodies to SARS-CoV-2 Spike antigens.
- (c) PCR-negative infected individuals, successfully recovered from infection, to assure presence of potentially neutralizing antibodies.
- (d) Human donors, recovered from COVID-19 infection, positive for anti-Spike I Antibodies for the generation of hyperimmune plasma, as a possible immunotherapeutic approach to the disease.
- (e) Vaccinated individuals to assure a reliable positive immunization with development of anti Spike Antibodies.



NAME	CODE	FORMAT	DESCRIPTION
DIA.CHEMILUX SARS-CoV-2NCP IgM	RACOV19M.CE	100 tests	Determination of IgM antibodies
DIA.CHEMILUX SARS-CoV-2NCP IgA	RACOV19A.CE	100 tests	Determination of IgA antibodies
DIA.CHEMILUX SARS-CoV-2NCP IgG	RACOV19G.CE	100 tests	Determination of IgG antibodies
DIA.CHEMILUX SARS-CoV-Spike/RBD Ab	RACOV19SPIKEAB.CE	100 tests	Determination of IgG antibodies to COVID-19 Spike/RBD antigens

Method:	CLIA
Sample:	Human plasma and sera
Shelf-life:	12 months
Storage temperature:	+2...+8°C
Automation:	for the use in exclusive combination with the DIA.PRO CLIA random access instrument named S.A.R.A.



Dia.Pro Diagnostic Bioprobes S.r.l.
Via Carducci, 27 - 20099 Sesto San Giovanni (MI) - Italy
Tel. +39 02 27.00.71.61/64.50 Fax +39 02 26.00.77.26
<http://www.diapro.it> - email: info@diapro.it

EN ISO 13485:2013 Certified

